

C-1900 JetStream Cable Blowing Machine

The C-1900 has been designed to provide maximum cable protection, combined with the performance and reliability of hydraulic drive. The profiled double drive belt system is driven by single 32cc hydraulic motor, powered by the proven C-1203-F power pack.

The electronic monitoring system provides read-out of speed and distance, gives protection against duct obstructions and includes emergency stop facility.

The C-1900 is adjustable to suit a wide range of cable diameters 4-20mm, and duct diameters 12-50mm o/d.

Main Features

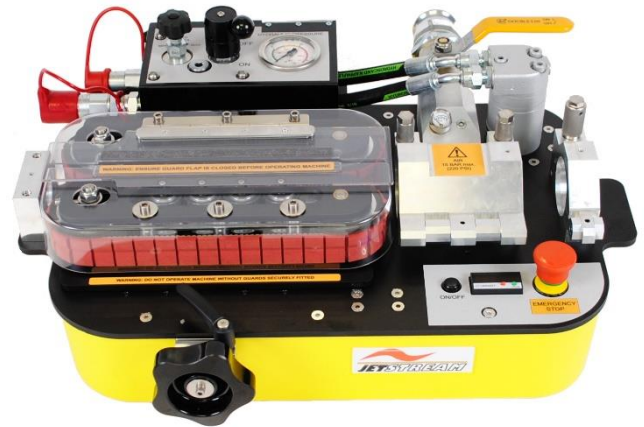
- Automatic Cable Centralisation
- Synchronous high grip profiled drive belts
- Tabletop design
- Variable speed control
- Single person operation
- Digital cable speed and length monitoring
- Integral air valve and pressure gauge
- Easy cable threading
- Polycarbonate safety guarding
- Low maintenance
- Wheeled Travel case
- Tool kit

Specification

Cable Range:	4-20mm
Duct Range:	12-50mm
Cable Speed:	85m/min
Pushing Force:	600N
Maximum Air Pressure:	15 Bar
Drive Media:	Hydraulic
Drive Type:	Profiled Belt
Drive Orientation:	Horizontal
Cable Speed Measurement:	Proximity Switch

Shipping Specification (In Transit Case) JetStream Only

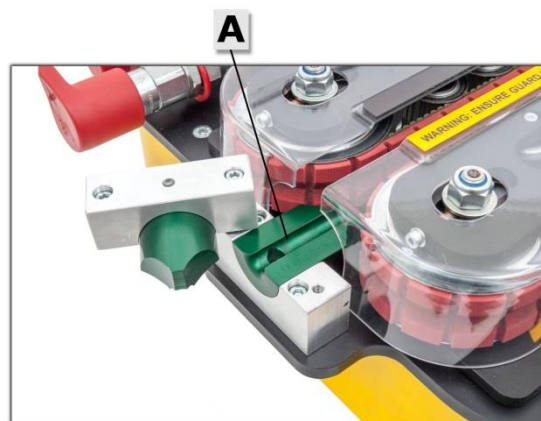
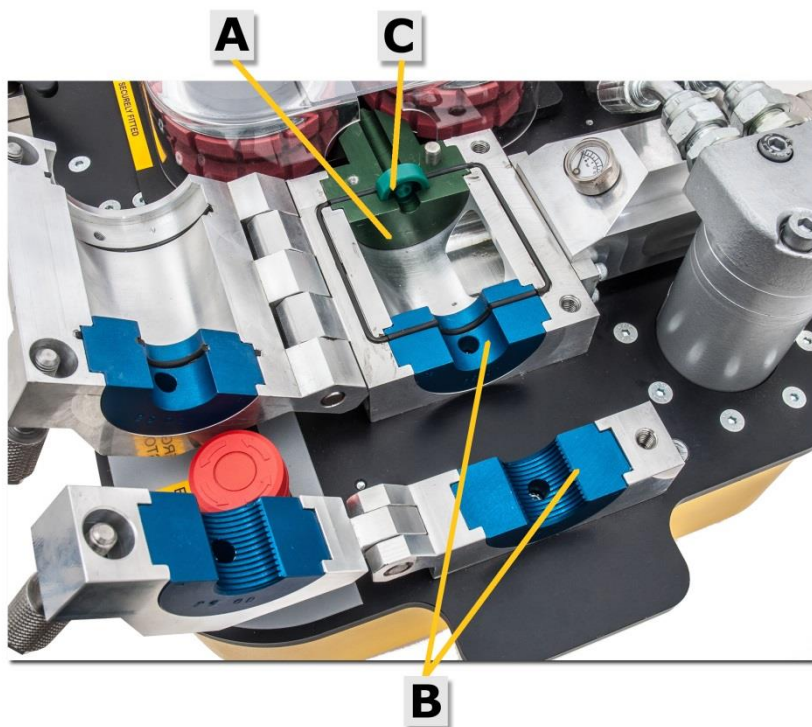
Length:	700mm
Width:	590mm
Height:	550mm
Weight:	60Kg



<u>Product No</u>	<u>Description</u>
C-1900	JetStream Cable Blowing Machine

JETSTREAM Configuration

In order to configure your JetStream to your application, we ask that you pick one of each from the list below, the cable collet assembly (A), the duct clamp and seal collets (B) and cable seals (C).



(A) Cable Collet Assembly



Cable Diameter Product No

4-6mm	C-1900-C-0406
6-9mm	C-1900-C-0609
9-12mm	C-1900-C-0912
12-16mm	C-1900-C-1216
16-20mm	C-1900-C-1620

(B) Duct Clamp & Seal Collets



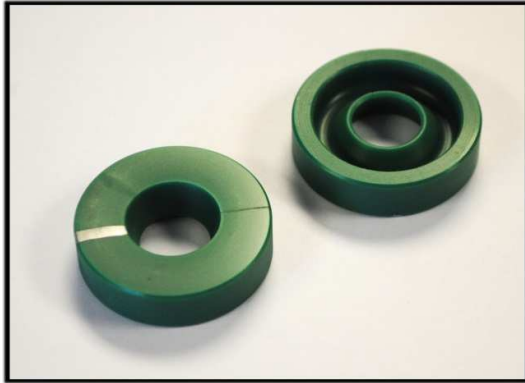
Duct Dia (Outer) Product No

12mm	C-1900-D-12
14mm	C-1900-D-14
16mm	C-1900-D-16
18mm	C-1900-D-18
20mm	C-1900-D-20
25mm	C-1900-D-25
32mm	C-1900-D-32
40mm	C-1900-D-40
50mm	C-1900-D-50

For Further Information

Telephone No: +44(0) 1572 723665

E-mail: sales@cbsproducts.com • Website: www.cbsproducts.com

JETSTREAM Configuration - Continued**(C) Cable Seals (Supplied in packs of 10)****Cable Diameter****Product No**

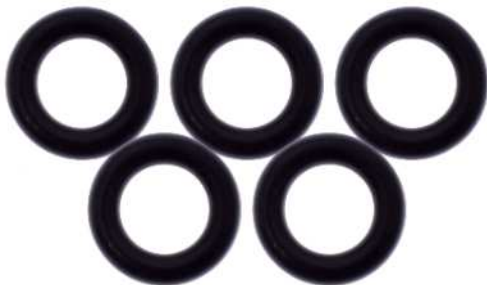
4-5mm	C-1255-0208-04-05
5-6mm	C-1255-0208-05-06-1
6-7.5mm	C-1255-0208-06-07.5
7.5-9mm	C-1255-0208-07.5-09
9-10.5mm	C-1255-0208-09-10.5
10.5-12mm	C-1255-0208-10.5-12
12-14mm	C-1255-0208-12-14-F
14-16mm	C-1255-0208-14-16-F
16-18mm	C-1255-0208-16-18-F
18-20mm	C-1255-0208-18-20-F

(D) Cable Seal Plug**Cable Diameter****Product No**

4-5mm	C-1256-0206-05
5-6mm	C-1256-0206-06
6-7.5mm	C-1256-0206-07.5
7.5-9mm	C-1256-0206-09
9-10.5mm	C-1256-0206-10.5
10.5-12mm	C-1256-0206-12
12-14mm	C-1256-0206-14
14-16mm	C-1256-0206-16
16-18mm	C-1256-0206-18
18-20mm	C-1256-0206-20

Tube Seal O Rings

Tube seals are supplied in packs of 5.

**Product No****Description**

C-1300-TS-12-5	Tube Seal O Rings 12mm
C-1300-TS-14-5	Tube Seal O Rings 14mm
C-1300-TS-16-5	Tube Seal O Rings 16mm
C-1300-TS-18-5	Tube Seal O Rings 18mm

JETSTREAM –Drive Belts

Drive belts are supplied in pairs. Please state the cable size when asking for belts.

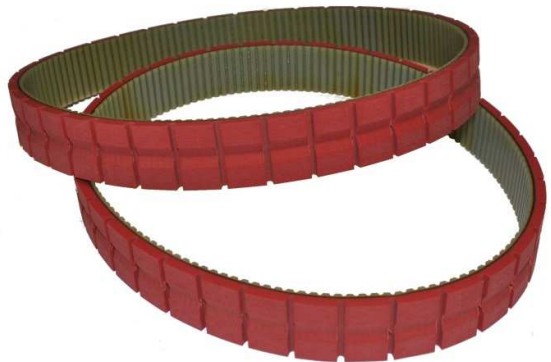


Product No

C-1900-DB

Description

Drive Belt (Pair)
6-20mm o/d cable



Product No

C-1900-DB-1

Description

Drive Belt (Pair)
4-16mm o/d cable

Hydraulic Power Pack

A trolley mounted hydraulic power pack with pre-set internal system protection relief valve and quick release connectors.

The unit is powered by an air-cooled, 8hp Honda GX240 petrol engine, delivering 15 litres/min at a working pressure of 115 bar from the hydraulic circuit. The circuit is protected with return line and suction filters.

The unit is mounted on a robust, wheeled trolley.



Specification

Height:	615mm
Length:	720mm
Width:	530mm
Weight:	66kg
Hyd Oil Capacity:	5 Litres

Product No

C-1203-F

Description

Hyd power pack c/w 7m hoses & electric lead

Universalube

Universalube is a water-based preparation based on wax and silicone polymers. It is easily applied and exhibits excellent coverage.

It is non-toxic, non-flammable and has no physical or chemical effects on cable sheath or sub duct. It can be used on cable blowing, cable pulling or duct pushing.

Typical Properties

Appearance:	Milky Mobile Liquid
SG:	Approx 1
Viscosity:	2500 – 4000 cst
PH:	6 – 8



Product No

C-LUBE-02-F

Description

Universalube Lubricant – 20 Lts